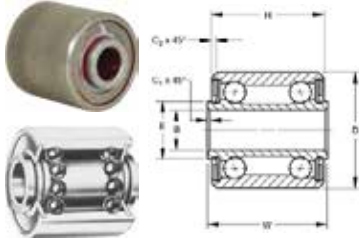


# BEARINGS – UNIVERSAL JOINTS



## DW SERIES BEARINGS (MS 27647)

- Extra Wide, Double Row, Ball
- Equipped with removable Plya-Seals
- Dimensionally interchangeable with the DW series, the GDW series is lubricatable through holes and a groove in the outer ring.

FAFNIR AND MS AFB MA Bearing No.	Bore 27647	B		D		W		H		A		E		C		Balls		Pure Moment Rating Inch-Lbs.	Moment Constant 1 Inch	Weight Pounds (Approx.)	Price Each
		Diameter +.0000 - .0005 Inches	Outside Inner Ring +.0000 - .0005 Inches	Width Outer Ring +.000 - .0005 Inches	Width Inner Ring +.000 - .0005 Inches	Shoulder Width Bore Ring (Approx.) Inches	Corner Chamfer x 45° Inner Ring O.D. +.015 - .000 Inches	Outer Ring +.015 - .000 Inches	No.	Size											
† DW4K2*	-4A	.2500	.6250	.562	.500	.344	.016	.016	16	3/32"	121	3.49	.025	---							
DW4K*	-4	.2500	.7500	.875	.750	.435	.005	.016	14	9/64"	365	2.27	.04	---							
DW5	-5	.3125	.8750	.9375	.8125	.472	.005	.016	26	9/64"	830	1.85	.07	---							
DW6	-6	.3750	1.0625	1.1875	1.0625	.576	.005	.016	24	3/16"	1830	1.38	.12	---							
DW8	-8	.5000	1.4375	1.5000	1.3750	.715	.005	.032	22	17/64"	4330	1.07	.29	---							

EQUIVALENT THRUST LOAD = THRUST + .6 RADIAL LOAD + MOMENT CONSTANT x MOMENT IN INCH-LBS.

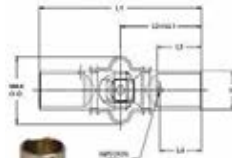
\*Bearing stamped DW4K. †Bearing stamped DW4K2.

These bearings are not to be used as track rollers, cam follower rolls and the like.

\* RETAINER TYPE

AP

## MS20271 UNIVERSAL JOINTS



Complete universal joint line includes a full range of military certified MS20271 and continually tested universal joints used in defense vehicles, aerospace applications, as well as shift/gear change linkage in specialty vehicles.

Meets or exceeds military specification MIL-J-6193

Part No.	ID (in.)	Price Ea
MS20271-B8	3/8	---
MS20271-B10	1/2	---
MS20271-B12	5/8	---
MS20271-B14	3/4	---



Dash #	+.000, -.002 (+.000, -.051) Outside Dia.		+/--.015 (+/--.381) Overall Length		+.031, -.000 (-.787, -.000) Bore Depth		+.004, -.025 (+.102, -.025) Bore Dia.		+/--.015 (+/--.381) Insp. Hole Loc.		Max Dia. (+.102, -.025) Cover Dia.		Weight Max	
	in	mm	in	mm	in	mm	in	mm	in	mm	in	mm	lbs.	kg.
B8	.495	12.57	2.625	66.67	.625	15.88	.375	9.52	.562	14.27	1.031	26.19	.09	.041
B10	.620	15.75	2.750	69.85	.750	19.05	.500	12.70	.687	17.45	1.156	29.36	.18	.082
B12	.745	18.92	3.187	80.95	.875	22.22	.625	15.88	.812	20.62	1.437	36.50	.24	.109
B14	.870	22.10	3.625	92.07	1.00	25.40	.750	19.05	.937	23.80	1.562	39.67	.35	.159

\*Five hour test at 15° angle.

### TORSIONAL OVERLOADS

### AXIAL OVERLOADS



Temporary torsional overloads as great as 80% of rated ultimate have been handled by these universal joints without harmful binding.

Temporary axial overloads ranging up to 150% in excess of rated ultimates have been imposed without binding. These characteristics insure high safety factors under the most difficult operating conditions.

## H-9426 BALL JOINT

\* Hex: 1/2 Inch \*Thread: 5/16-18 \*Ball: 10 mm P/N 06-00675



P/N 05-07600

## BALL JOINT ASSEMBLIES

### COMMERCIAL

Ball Joint Style	Female End	Male End	Part No.	Price
Is similar to AN276-6. Experimental Only	1/4-28	1/4-28	05-07300	---
Commercial	10-32	1/4-28	05-07400	---
Commercial	10-32	10-32	05-07500	---
Commercial	1/4-28	1/4-28	05-07600	---

## LUBRICAPS



These bright red Lubricaps are made of molded rubber and are used as grease fitting covers. The internal lip holds the cap in place and keeps out dirt, sand, and fluids.

M-24529 (20% discount for 100/each) P/N 04-01940

## BELLCRANK BEARINGS



Part No.	Bore	Flange Dia.	Race Width	Price Each
BC4W10 (AN218-4) Experimental Only	1/4"	1-5/8"	5/8"	---
BC5W11	5/16"	1-11/16"	5/8"	---

\*Military P/N AN218P4 / MS20218-1. Certs Available.

All bearings inspected per MIL-145208A. 100% traceable. Currently installed on new and rebuilt certified aircraft. Prepacked with lubricant conforming to MIL-G-23827

Quantity discount quoted on request

## SINGLE-ROW TAPERED ROLLER BEARINGS



The most basic and widely used tapered bearing, the single-row type consists of the cone assembly and the cup. It is usually fitted as one of an opposing pair. During equipment assembly, single-row bearings can be set to the required clearance (endplay) or preload condition to optimize performance. Single-row tapered roller bearings have positive roller alignment that ensures true rolling motion and generates a "seating force" that pushes the roller against the cone large rib. This seating force prevents the rollers from skewing off apex, thereby keeping them positively aligned and located against the cone large rib.

P/N 05-29749

## BRONZE BUSHINGS

### SS-610-8



Cast Bronze bearings fit a wide range of applications.

**Key Benefits:**

High Strength, Excellent Machinability P/N 04-01937