



ROTAX 912 2-1/4" CHT GAUGE FARENHEIT

Rotax 912 CHT Temp - F. For use with VDO sensor only. Red: 270-300. Yellow: 100-150, 220-270. Green: 130-220 Diameter: 57mm (2.25 in.). Motor: 912S. P/N 15-06646..... \$116.85



ROTAX 912UL 2-1/4" CHT GAUGE
IM-549 - Water Temperature Indicator (CHT) Rotax 912 engine (80HP) and 914.57 mm - Scale in °F. Designed specifically for Rotax 912 (80HP) and 914 with silkscreen red areas green and yellow. Diameter 57mm, 100-300° F range, distance between 2° F indications in central area. Supply voltage 8-35V DC. It works with sensors that come from the factory with Rotax engines. P/N 15-08392..... \$120.75



ROTAX 912 2-1/4" EGT GAUGE FARENHEIT

A540 Rotax 912 EGT Temp - F. For use with Aviasport Sender only. Red: 1500-2000. Yellow: 600-1100. Green: 1100-1450. Diameter: 57mm (2.25 in) P/N 15-05922..... \$182.75

OTHER ROTAX EGT GAUGES

- IM-774 2" EGT 300-1000 C Rotax 914..... P/N 15-08550..... \$109.99
- IM-775 2-1/4 EGT 300-1000 C Rotax 914..... P/N 15-08551..... \$119.75
- IM-776 2 Dual EGT 300-1000 C Rotax 912..... P/N 15-08552..... \$118.75
- IM-777 2-1/4 Dual EGT 300-1000 C Rotax 912..... P/N 15-08553..... \$121.75
- IM-778 2 Dual EGT 300-1000 C Rotax 914..... P/N 15-08554..... \$118.75
- IM-779 2-1/4 Dual EGT 300-1000 C Rotax 914..... P/N 15-08555..... \$121.75
- IM-780 2 EGT 600-1800 F Rotax 912..... P/N 15-08556..... \$112.95
- IM-781 2-1/4 EGT 600-1800 F Rotax 912..... P/N 15-08557..... \$123.80
- IM-782 2 1/4 Dual EGT 500-1300 F Rotax 503..... P/N 15-08558..... \$129.99
- IM-783 2.25 Dual EGT 500-1300 F Rotax 582..... P/N 15-08559..... \$129.95



ROTAX 912 2-1/4" OIL PRESSURE GAUGE PSI

A572 Rotax 912 Oil Pressure - PSI. For VDO Sender only. Red: 0-12, 90-150 psi. Yellow: 75-90 psi. Green: 30-75 psi. Diameter: 57mm (2.25 in) P/N 15-05924..... \$116.85



ROTAX 912/914 OIL PRESSURE GAUGE

• 2 Oil Pressure • Ideal for use on Rotax 912/914 • Ranges from 0-80psi • Includes 1/8 male NPT sender • Fits 2 1/16 cutout • Completely electrical • Requires 12 volts D/C..... P/N 15-06319..... \$122.75



ROTAX 912 2-1/4" OIL TEMPERATURE GAUGE FARENHEIT

A558 Rotax 912 Oil Temp. For use with VDO Sender only. Red: 90-120, 280-320. Yellow: 120-190, 230-270. Green: 190-230. Note: Not for 912S and 914 engines. See "Alternate Items" part number 15-08399. Diameter: 57mm (2.25 in.) Motor: 912S/914..... P/N 15-05926..... \$116.85



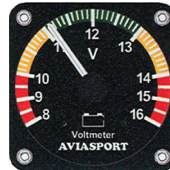
ROTAX 912 2-1/4" TACHOMETER

A105 Rotax 912 Tachometer. 0-7000 rpm. Electronic Connection only. Red: 0-1200, 5800-7000. Yellow: 1200-1800, 5500-5800. Green: 1800-5500. P/N 15-05932..... \$145.85



ROTAX 912 3-1/8" TACHOMETER

A149 Rotax 912 Tachometer - 3-1/8". 0-7000 range. Electronic connection only. Red: 0-1200, 5800-7000. Yellow: 1200-1800, 5500-5800. Green: 1800-5500. P/N 15-05930..... \$155.75



ROTAX 912 2-1/4" VOLTMETER

A562 Rotax 912 Voltmeter. Red: 8-10, 14-16 volts. Yellow: 10-11, 13-14 volts. Green: 11-13 volts. P/N 15-06650..... \$115.75



ROTAX 912 2-1/4" FUEL PRESSURE GAUGE BAR

A564 ROTAX 912 Fuel Pressure Bar. Requires Sender below. Red: 0-1.5, 4-6 bar. Green: 1.5 - 4.0 bar. Diameter: 57mm (2.25 in.). Sensor: 7 PSI. P/N 15-06647..... \$127.75



FUEL PRESSURE SENDER - 1/8 NPT

A603 Aviasport Fuel Pressure Sender. 1/8" NPT threads. P/N 15-06648..... \$185.95



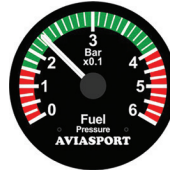
ROTAX 912 EGT 4 READING KIT

The IM-553 instruments have been designed especially to measure the EGT in Rotax® engines 912. Includes the IM-580 EGT Connection Box. 300-1000°C P/N 15-08617..... \$184.99



ROTAX 912UL 912 ULS 2-1/4" EGT KIT

The IM-540 instruments have been designed especially to measure the EGT in Rotax® engines 912. Includes the IM-580 EGT Connection Box. 800-1800°F P/N 15-08620..... \$181.75



ROTAX 912 2" INCH FUEL PRESSURE KIT

The IM-584 have been designed especially to measure the FUEL Pressure in Rotax® engines 912 (Series). Includes the IM-604 Sensor. The display areas are divided into red, green and yellow zones in line with Rotax limits. 0-6 Bar. P/N 15-08624..... \$298.95



ROTAX 912 2-1/4" INCH FUEL PRESSURE KIT

Unlike mechanical instruments fuel pressure, electronic instruments use a high precision sensor to be installed close to the engine, avoiding cabin carry fuel lines. Includes the IM-604 Sensor. 0-8 PSI. P/N 15-08629..... \$423.00



ROTAX 914 3 EGT 4 READING KIT

The IM-576 instruments have been designed especially to measure the EGT in Rotax® engines 914. Includes the IM-580 EGT Connection Box. The instruments use a pointer that turns 240°, which gives them great resolution. Their display areas are divided into red, green and yellow zones in line with the ROTAX limits. 600-1800 °F. P/N 15-08623..... \$184.95

AVIASPORT ROTAX EGT TYPE K SENSORS



Probe for the measurement of the temperature of exhaust (EGT) for all ROTAX engines. It has a thread metric 8 and it can be installed directly on the M8 nuts that come from manufacturers some 912 and 914 engines. On the outlets that do not have these nuts, it is necessary to weld a nut M8. Stainless steel jacket. 6 ft..... P/N 15-09438..... \$56.75
9 ft..... P/N 15-09439..... \$63.75



AVIASPORT ROTAX EGT TYPE K SENSOR WITH CLAMP

Probe type clamp "K". Designed for engines ROTAX 447/503/582, you don't need welding. Simply drill the holes and tighten the clamp. Protected with stainless steel mesh. 2 meters cable length. P/N 15-09440..... \$55.65

IN